

157th NORTH SOMERSET *Show*



Monday 2nd May

North Somerset Agricultural Society Poultry and Waterfowl Show



To be held on Monday 2nd May 2016 at the North Somerset Show
At Bathing Ponds Fields, Wraxall, near Bristol (on the B3130)

Entries Close on 4th April 2016

SCHEDULE OF CLASSES

Large

BREED CLASSES.

Class 1	Welsummer Male/Female
Class 2	Maran Male/Female
Class 3	Sussex Male/Female
Class 4	Rhode Island Red Male/Female
Class 5	Silkie Male/Female
Class 6	Large Fowl Any Variety – Male
Class 7	Large Fowl Any Variety – Female
Class 8	Rare Breed Large – Male or Female
Class 9	Junior Exhibitor Large Fowl Any Variety – Male or Female
Class 10	Best Trio – Large
Class 11	Junior Exhibitor Waterfowl Male/Female
Class 12	Waterfowl Any Variety Large – Male
Class 13	Waterfowl Any Variety Large – Female
Class 14	Youngstock Large Fowl Soft Feather Male or Female
Class 15	Youngstock Large Fowl Hard Feather Male or Female
Class 16	Youngstock Large Waterfowl Male or Female
Class 17	Any Variety Crossbreed Pet Large/Bantam Male/Female

Bantam

BREED CLASSES

Class 18	Pekin Male/Female
Class 19	Sebright Male/Female
Class 20	Sussex Male/Female
Class 21	Plymouth Rock Male/Female
Class 22	Wynadotte Male/Female
Class 23	True Bantam – Male
Class 24	True Bantam – Female
Class 25	Bantam Soft Feather Light – Male or Female
Class 26	Bantam Soft Feather Heavy – Male
Class 27	Bantam Soft Feather Heavy – Female
Class 28	Bantam Hard Feather – Male or Female
Class 29	Rare Breed Bantam – Male or Female
Class 30	Best Trio – Bantam
Class 31	Junior Exhibitor Bantam Any Variety – Male or Female
Class 32	Junior Exhibitor Best Trio
Class 33	Call – White Male/Female
Class 34	Call – Any Other Colour Male/Female
Class 35	Waterfowl Any Variety Bantam – Male
Class 36	Waterfowl Any Variety Bantam – Female
Class 37	Youngstock Bantam Soft Feather Male or Female
Class 38	Youngstock Bantam Hard Feather Male or Female
Class 39	Youngstock True Bantam Male or Female
Class 40	Youngstock Bantam Waterfowl Male or Female

Entry Fees £1.50 per class (Trio Classes £2.00)

Youngstock Classes for birds hatched in 2016

Junior Exhibitor Classes for Children aged 16yrs & under

Trophies for Best in Show

Best Overall Male

Best Overall Female

Best Waterfowl

Best Junior

Awards from The Poultry Club of Great Britain

Egg Classes

Large/Bantam Poultry Eggs

Class 41	Single Egg – Large
Class 42	Single Egg Large – Contents
Class 43	Single Egg – Bantam
Class 44	Single Egg Bantam – Contents
Class 45	Three Eggs – Large
Class 46	Three Eggs – Bantam
Class 47	Single Waterfowl Egg
Class 48	Three Waterfowl Eggs
Class 49	Single Waterfowl Egg Contents

Entry Fees for Egg Classes 50p Per Plate

Judge: Mr J A Pearce, South Molton

CONDITIONS AND REGULATIONS OF ENTRY

The judging of classes will commence at 9.00am prompt. Classes may be split or amalgamated at the discretion of the judge, whose decision is final.

Please note all birds must be penned by 8.30am.

***** All exhibitors must be in possession of a valid ticket for entry to the showground. These may be purchased in advance with submitted entry forms for adults £8.00, children £4.00. One free entry ticket for every £7.50 worth of entries.

Please note that if you have entered via the White Gate and parked on the Showground, you will not be permitted to leave the Showground until 5.30pm. If you need to leave earlier than this, please park in the free public car parks.

SALE SECTION

A Sale Section will be open to show exhibitors only, at the cost of £2.00 per cage. One Sale Cage to every three show bird entries. If you would like to apply for additional cages please enclose a separate cheque for this amount for administration purposes. Commission will be charged at the rate of 15% of the sale price for each lot sold. The North Somerset Show accepts no liability for any transactions made by cheques. All entries must be received by the secretary by the close of entries. ALL BIRDS ENTERED IN THE SALE SECTION WILL BE SUBJECT TO RANDOM VETERINARY CHECKS. A separate entry form will be required for show entries and sale cages. For any further enquiries please contact the poultry secretary.

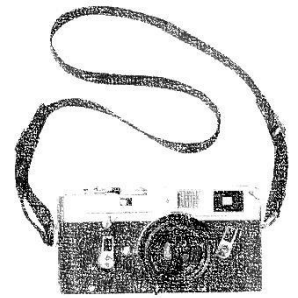
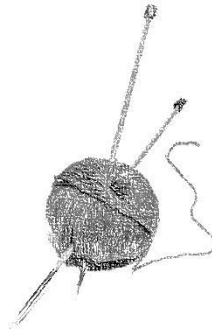
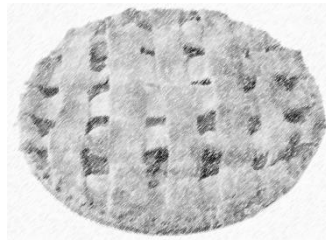
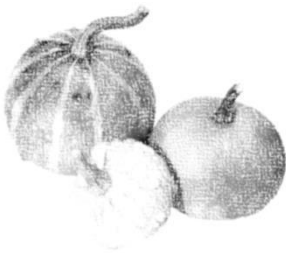
Show Secretary: Miss Alicia Hill
1 Culm View
Cullompton
Devon. EX15 1NX

Mobile: 07977 128514

Email: aliciaatkerrells@btinternet.com

North Somerset Agricultural Society Craft & Produce Show

Saturday 10th September 2016



To be held at Moorledge Farm & land adjoining,

Chew Magna

By kind permission of Mr & Mrs G James and

H. Curtis & Sons.

in conjunction with the 173rd North Somerset

Ploughing and Hedging Match

**Classes for handicrafts, preserves, photography, art,
baking, garden produce, flower arranging etc.**

Includes classes for children